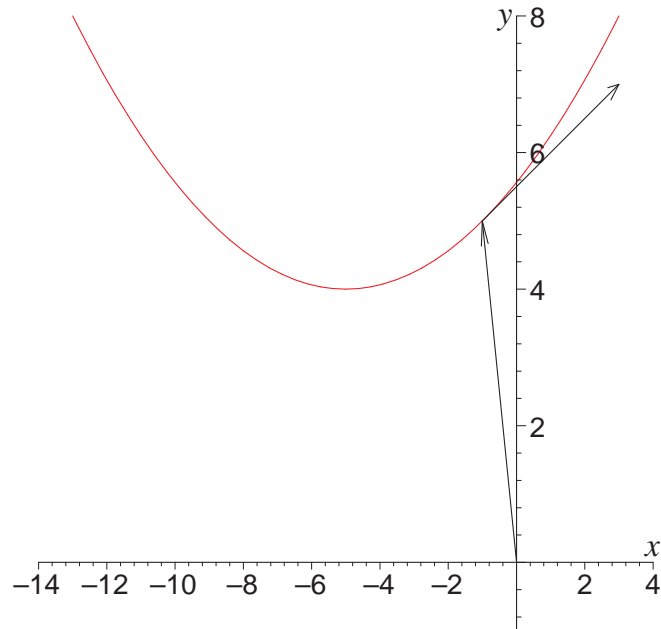


Since $\frac{(x+5)^2}{16} = t^2 = y - 4 \Rightarrow y = \frac{(x+5)^2}{16} + 4$, the curve is a parabola.
(a),(c)



(b) $\mathbf{r}'(t) = \langle 4, 2t \rangle$, $\mathbf{r}'(1) = \langle 4, 2 \rangle$